

 **RU KU1952®**





A Product With Cult Status



INDEX

About Us

History	6
Reforestation	10
Why RUKU1952®	12

Beer Garden Table Sets

Set-up	16
Wood and Steel	18
Classic Models	20
Quality From the Manufacturer	24
Printing	28
Short Beer Table Set	32
Poseur Tables	34
Accessories	36
Custom-Made Products	46

Designer Sets

Lago	42
Riva	44
Rustica	46

Beer Garden Furniture

All Models	50
------------	----



Classic Models 20



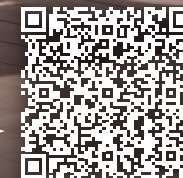
Shorty 32



Lago 42



Riva 44



Easily compare and order
products in our online shop
www.ruku1952.com



Enjoy the Cosiness and Get-Together



Decades of Experience

What had its origins in a small workshop has developed into an internationally successful company over the years. Today it employs over 400 people worldwide.

Let's look back on over 75 years of company history together!

1948

Founding year. Franz Zingerle founds Zingerlemetal in South Tyrol, Italy.



1984

2nd Generation. The sons of Franz Zingerle, Martin and Georg, join the company and start producing beer garden table sets.



1993

A wider product range.

The brothers start producing and selling folding gazebos under the Mastertent® brand.

1995 - 2018

Expansion. A new company building in Italy, a second production facility in Romania and numerous foreign branch-es e.g. in Spain and the USA are built.



2014

Business takeover. The takeover of HBS GmbH and RUKU Klappmöbel GmbH in Germany takes place and shortly afterwards they merge to RUKUevent GmbH.

2019

A new facility. The new company building in Illertissen, Germany is inaugurated.

2018

3rd Generation. Georg Zingerle becomes the sole owner of the company and the siblings Stefan, Sonja and Thomas Zingerle join their father's family business.

2023

House of Brands. The umbrella brand Zingerle Group is founded and the brand portfolio expanded: Since 2023, the company unites three brands under one roof.

ZINGERLE GROUP

MASTERTENT®



The premium brand for folding gazebos.

ECOTENT®



Stable folding gazebos at attractive prices.

RUKU1952®



The brand for traditional beer garden table sets.



Between Tradition and Innovation

In the 1970s, the Zingerle brothers prove that they work with real entrepreneurial spirit in their locksmith's shop.

The great confidence a customer shows in the base frame they've designed, makes them start the professional and serial production of beer garden table sets and conquer the Italian market. With success. This success is followed by the expansion abroad and it turns into true passion. After the German company RUKU, one of Zingerlemetal's customers, runs into difficulties, the Zingerle brothers decide to take over the business. It was important to them to keep this business running, since it was Rudolf Kurz, the founder of RUKU, who invented and patented the folding furniture lock in 1952.



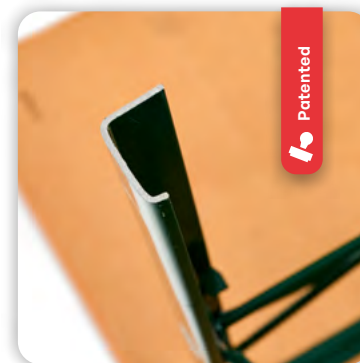
▲ THE FIRST FOLDING FURNITURE MODELS CAN BE FOUND IN THE MUNICH CITY MUSEUM.



Patented

More Comfort

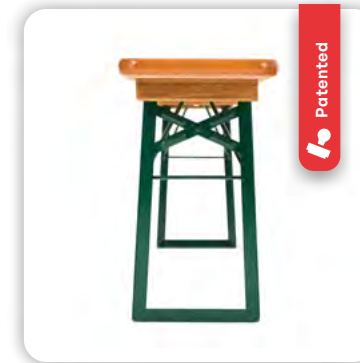
2011. The X-shaped base frame provides more space for your legs and is characterised by its elegant design.



Patented

C Profile

2014. Lighter and 20 % stronger than conventional base frames. We've worked hard to find the ideal solution for optimising and replacing the classic angle profile. In 2014, we succeeded and this unique invention still distinguishes our foldable furniture today.



Patented

Trapezoidal Shape

2014. The patented trapezoidal shape of our frame bases is not only our trademark, it also gives our foldable tables and benches particularly high stability and tilt resistance.

A Wider Product Range

2012 - today. We have made it our mission not to limit the proven and tested folding furniture lock to our classic beer garden table sets, but to use this mechanism also for all our newly developed models. As a result, we are constantly developing new products whose common feature is the very handy folding function.



We Are Reforesting Native Forests

We source the wood for our products from forests in Romania and process it on site in our own production facility with the utmost care.

With the aim of compensating the unavoidable emissions as best as possible, we support a reforestation programme in the Harghita mountain region every year. Every year, we plant an average of 6,000 trees and thus make an active contribution to reforestation and forest conservation - a clear commitment to sustainable management!



Why RUKU1952®?

Because quality is timeless... Comprehensive customer service, generous warranties and international certifications for materials, production processes and technology are all part of our quality philosophy.



Our Certifications & Classifications

- › TÜV-SÜD certified (product certification)
- › Static examination of the “Comfort” base frame
- › Static examination of the C-shaped steel profile
- › All materials and substances we use for the production of our tables and benches are REACH-compliant and are therefore considered harmless to health
- › The Landshuter Lackfabrik, manufacturer of the UV roller varnish we use, confirmed that the varnish is free of harmful substances
- › The Landshuter Lackfabrik, manufacturer of the UV glaze we use, confirmed that the glaze is food-safe
- › A fire protection test approved that, according to DIN 4102 B1, the Firelock® UV glaze is fire retardant

All original certificates are available upon request.

Warranty Services

- › 10-year warranty on spare parts and functionality of the base frames.



**We are tested
and we test ourselves.**

BEER GARDEN TABLE SETS

The Inviting Folding Furniture





Fast Assembly and Dismantling

Thanks to their folding function, our beer garden table sets are easy to set up and take down in no time at all. When they're not in use, they can be easily stowed away to save space.

Let's go... Create the most flexible seating you can imagine very quickly - try it out!



1. Unpack



2. Unfold



3. Sit on it!



THIS IS HOW SIMPLE AND FAST THE ASSEMBLY IS

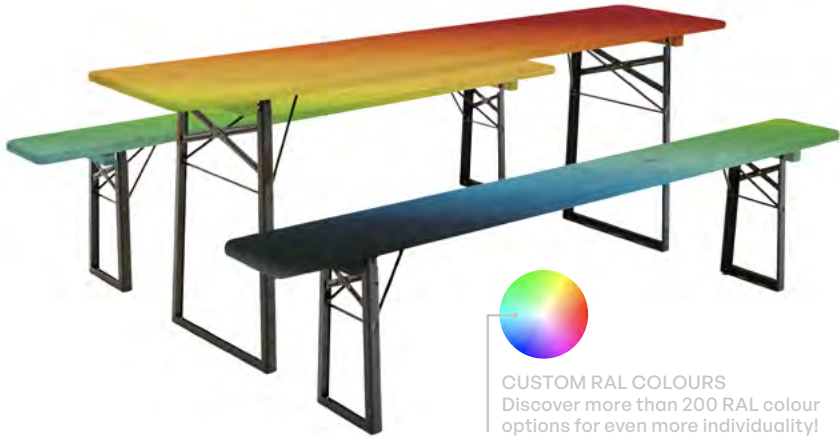
A Matter of Taste

Choose your favorite wood colour for your beer garden table set from three available options. The base frame is, in accordance with the selected wood colour, in either a classic green or modern black.



It can't get more individual!

Additional custom colours* for wood and base frame are, of course, available upon request. As manufacturers, we have all options open to us.



CUSTOM RAL COLOURS
Discover more than 200 RAL colour options for even more individuality!

* Ask us about minimum quantities!

Beer Mug Test: Check!

Up to 230,400 beer mug pushes in 192 hours could not harm the high-quality surface coating of our beer garden table sets. That's real Oktoberfest resilience!

All beer garden table sets are treated with our specially developed and certified **Firelock® UV varnish**. It has been classified as „flame-retardant“ according to DIN 4102 B1 and is also weather-resistant, solvent-free, environmentally friendly, and food-safe.



WATCH THE VIDEO



Wooden top: carefully selected, kiln-dried spruce wood - extremely low in distortion and with minimal stone inclusions.



Base frame: robust, drawn flat steel - with powder coating to protect against corrosion and scratches.



Please Have a Seat

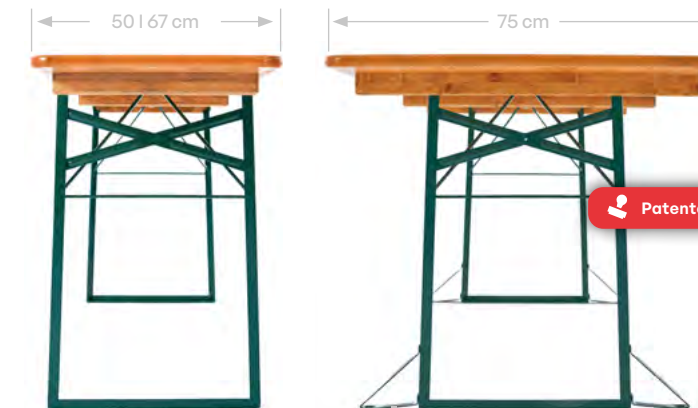
At big events, quality and stability are in demand. This is exactly what distinguishes our beer garden tables. Choose from many sizes, different colours and the possibility of an individual printing!

Suitable for indoor and outdoor use.

DO YOU ALREADY LOVE THEM? TABLES AND BENCHES FOR ELEGANT OCCASIONS.

The Classic Beer Table

Proven. Only we offer you the trapezoidal base frame made of powder-coated steel. It is lighter and 20 % stronger than competing models.



Length: 220 cm
Width: 50 | 67 | 75 cm
Height: 77 cm

FOR HIGHER STABILITY.
This model is made of a 75 cm wide table and thus offers a bigger surface.

A Base Frame for More Space

Advantageous. The Comfort model has revolutionised the Oktoberfest since it offers more space when sitting down and it distinguishes itself through an elegant design.



Length: 220 cm
Width: 50 cm
Height: 77 cm



True Seating Comfort

With our foldable beer benches you can create cosy seating in no time - for all your guests, whether invited or unexpectedly announced. They are available - just like the beer tables - in several sizes, colours and also personalised.

Suitable for indoor and outdoor use.

LET'S MOVE CLOSER TOGETHER:
THERE IS ALWAYS ENOUGH
ROOM FOR ONE MORE.

The Classic Beer Bench

Experienced. This beer bench is the classic in our range because it simply meets every requirement and stands up to every demand. It has already proven itself thousands of times, it is reliable and handy.



Length: 220 cm
Width: 25 | 27 cm
Height: 49 cm

The Beer Bench With Backrest

Comfortable. Our beer bench with ergonomically optimised backrest guarantees the highest level of seating comfort and is characterised by its easy use. Only one movement is necessary to fold it up and down.



ANTI-TIPPER.
The beer bench with backrest is equipped with an additional extension at the rear of the base frame.

Length: 220 cm
Width: 27 cm, backrest 18 cm
Height: 49 cm



100 % Made
in Europe

We Are Manufacturers

With heart and soul. 136 individual parts, 280 work steps and a lot of heart and soul - take a look at our production facilities and the manufacturing process of our products!



THIS IS HOW YOUR BEER GARDEN
TABLE SET IS CREATED - CHECK
OUT THE PRODUCTION VIDEO!

About How We Handle Wood Processing

Romania. The delivery of the raw spruce wood, the drying, cutting, gluing, the sanding of the edges, the varnishing as well as the drilling of the wood panels takes place in Romania. Almost 60 employees work there in our wood factory to produce the perfect wooden panels for our folding furniture.



Production and Assembly of the Base Frames

Italy. The steel for the base frames is delivered to the company headquarters in South Tyrol. The individual parts are welded together and then given the desired colour in our own powder coating plant. On the assembly line, the wooden panels from Romania are finally screwed to the base frames and, after a final quality check, shipped all over the world.

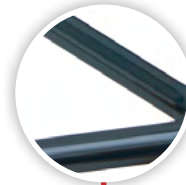
Quality Is Not a Coincidence

Highest stability, greatest reliability! Thanks to high-quality materials and sophisticated technology, our beer garden table sets reliably fulfil their purpose - for decades.



Folding Furniture Lock

Proven. The completely galvanised lock and the return spring of each furniture are checked individually. This guarantees a secure hold and perfect functioning. Engaged with millimetre precision, no wobbling!



Stiffening Ribs

Solid as rock. Additional stiffening ribs in the cross struts lead to increased stability.



Stacking Ledges

Stackable. The bevelled wooden ledges protect the set during stacking, transport and disassembly. All sets come with two stacking ledges.



A third stacking ledge, providing additional protection during frequent stacking, transportation, and disassembly, is available upon request.



TÜV-SÜD Certified

Tested. Our folding furniture is TÜV-certified, resistant and durable - real brewery quality! It is subjected to comprehensive and strict quality controls throughout the entire production process.



C-Profile
for added stability



Trapezoidal Base Frame
for added stability



Base frame with legroom
for added stability



THE FOLDING FURNITURE QUALITY CHECK - CONVINCE YOURSELF!



Corner Welding

Hard-wearing. The additional weld seam at the corners of the base frame closes the edges of the individual bent parts and joins them together to form a neat and robust unit.



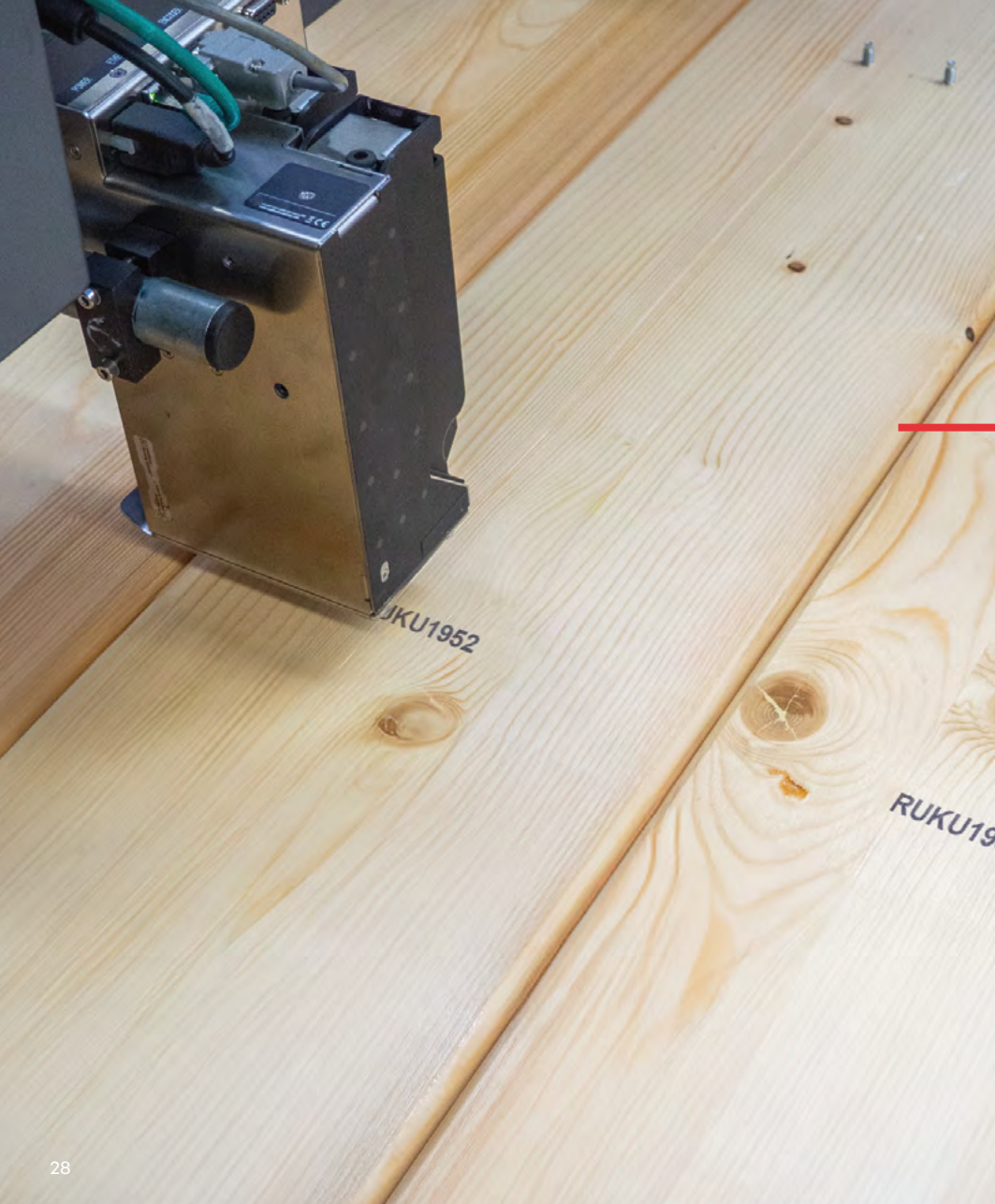
Bracket Latch

Clever. The bracket latch prevents the base frame from disengaging from the lock when the set is folded up.



Plastic Sliders

Gentle. The perforation on the base frame offers the possibility of attaching optionally available plastic glides for sensitive floors.



Individual Branding

Each set can be personalised - for easy recognition or as an advertising medium for special occasions. From a small logo to full-surface printing on the wooden panels, everything is possible. We offer you four different printing processes: Ink printing, burn-in, screen printing and digital printing.

Let your creativity run wild and impress with your folding furniture!

Ink Printing

Durable. This extremely resistant ink print is not soluble and is still very legible even after many years. With ink printing, letters and numbers can be printed on four places on the table or bench. It is ideal for labelling the furniture on the underside of the panels or can serve as a cost-effective advertising on the front side.



Burn-In

Embossed. Letters and characters are burned into the centre of the underside of the plate by means of a branding iron. The firing process turns the characters black and makes them sink slightly into the wood.



Screen Printing

Characteristic. We create your advertising logo as a screen and then print it on the top of the panel. To protect the print from scratches and damage, the printing is done between the second and third glaze application. The maximum size of the print is 25×25 cm and can be applied in one colour.

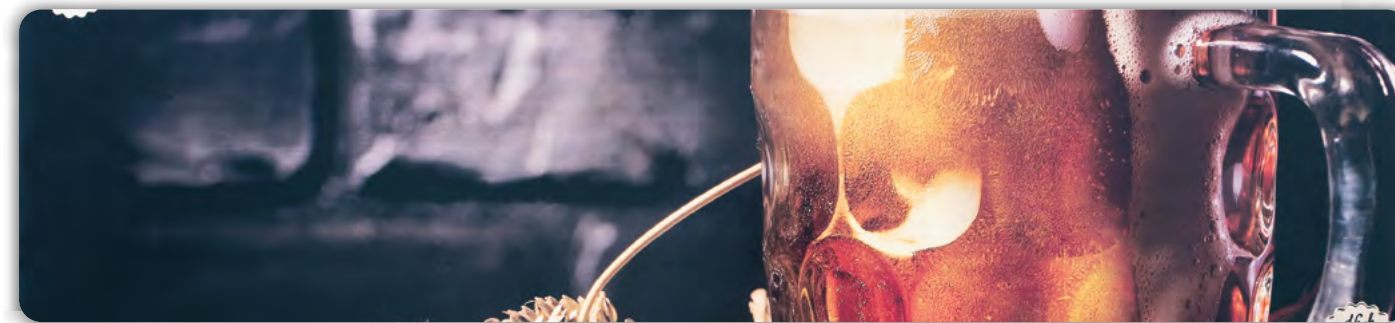


Digital Printing

Unmissable. There are no limits to your creativity with digital printing. Images and photos in high colour brilliance are applied between two layers of glaze and let your beer garden table set shine in a new look. Please bear in mind that we only offer digital printing for orders of 20 sets or more.

HOTCOATING®

On request, we seal the printed wood panels by means of the highly innovative premium coating called HotCoating®, which is mainly used in flooring.





When Space is Limited

Compact. The short version of our beer garden table sets called “Shorty” is the best solution when space is limited: on the balcony, the terrace or a narrow alley.



▲
BENCH AVAILABLE WITH
AND WITHOUT BACKREST

Table

Length: 108 cm

Width: 67 cm

Height: 77 cm

Bench

Length: 108 cm

Width: 33 cm, backrest 18 cm

Height: 49 cm





More Than Just a (High) Table

Generous. Whether as a high table or a mobile counter - the Stand Up with its two-metre long tabletop is particularly popular with our customers and can be used in a variety of ways.



AVAILABLE WITH AND WITHOUT FOOTBOARD

Length: 200 cm

Width: 60 cm

Height: 110 cm

Absolutely Compact

Advantageous. Thanks to its 80 cm diameter, the “Unbreakable” poseur table is the tried and tested classic among bar tables. Like all our folding furniture, it is stable and quick to assemble and dismantle.



OPTIONALLY AVAILABLE WITH UMBRELLA HOLE

Panel diameter: 80 cm

Panel thickness: 2 cm

Height: 110 cm



NOTE:
This item is available in Germany, Austria, Switzerland, France and Benelux.

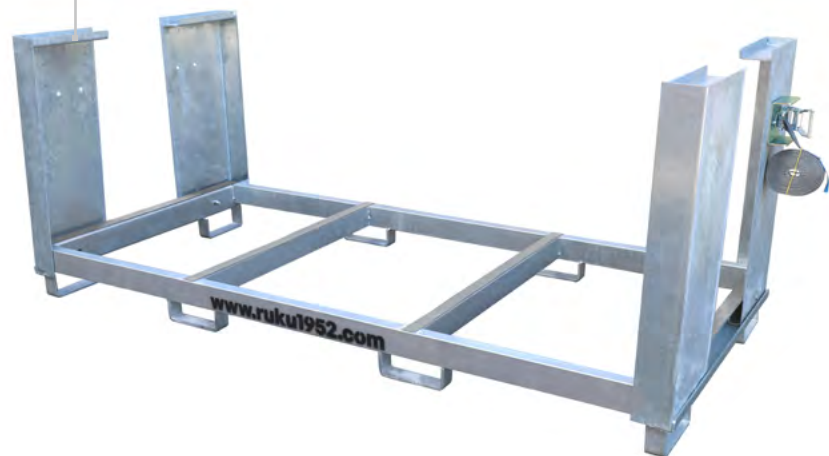




Functional Extras

All accessories are oriented towards the requirements of the practical use of our beer garden table sets. Well thought out in detail, convincing in every situation.

Easy transport. The transport container is used for the safe transport and space-saving storage of beer garden table sets.



NOTE:
Locking system
optionally available.

Pleasant. The 3-piece beer bench cover, consisting of a tablecloth and two bench cushions, gives the folding furniture set additional cosiness.



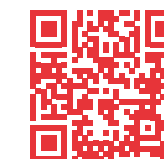
Weatherproof. The water-repellent cover protects the beer garden table sets from environmental influences such as dirt, rain and strong sunlight.



Protective. The plastic sliders protect sensitive floors from scratches when using the folding furniture indoors.



Durable. The repair kit for beer garden table sets allows you to repair small, disturbing cracks or holes in the wooden surface on your own..



◀ THAT'S HOW IT'S DONE!



Do You Need a Tailor-Made Set?

No problem!

We produce all components of our tables and benches in-house, allowing us to offer custom sizes of our folding furniture. Obviously, we also provide completely tailored solutions that meet every customer's wish.



OF COURSE WITH PRACTICAL FOLDING MECHANISM.



DESIGNER SETS

Functionality in Harmony With Modern Design





The Epitome of Style and Elegance

Stylish. The Lago is our most exclusive piece of furniture. It combines design with the functionality of conventional folding furniture.

The oak wood with its unique grain and special growth characteristics makes each Lago unique.



▲
BENCH AVAILABLE WITH
AND WITHOUT BACKREST

Table

Length: 200 cm
Width: 67 cm
Height: 76 cm

Bench

Length: 200 cm
Width: 33 cm, backrest 25 cm
Height: 47 cm





An Extraordinary Oasis of Well-being

Fascinating. Developed by the designer, the stylish Riva with its clean lines invites you to lean back and relax. The combination of the bright wood surface and the anthracite base frame gives it a minimalist, modern look. A set with a holiday vibe. And, of course, it is foldable.



INCLUDING PLASTIC GLIDERS

Table

Length: 200 cm
Width: 80 cm
Height: 75 cm

Bench

Length: 200 cm
Width: 40 cm, backrest 20 cm
Height: 45 cm





A Light Eye-Catcher

Light as a feather. The Rustica is a foldable solid wood set and convinces with its aesthetics and light weight. Whether in the private garden or in your restaurant, you will always cut a fine figure with this model.



▲
BENCH AVAILABLE WITH
AND WITHOUT BACKREST

Table		Bench	
Length:	180 cm	Length:	180 cm
Width:	60 cm	Width:	30 cm, backrest 18 cm
Height:	77 cm	Height:	49 cm



BEER GARDEN FURNITURE

Sociable Ambience in Traditional Style





A Meeting Point for Convivial Hours

Our ash wood beer garden furniture is stylish, very comfortable and creates a rustic atmosphere. It stands out for its meticulous craftsmanship, proven resilience, and reliability in daily use. Genuine hospitality quality!



NOTE:
This article is available in Germany, Austria, Switzerland, France and Benelux.

Summer, Sun, Beer Garden.

Traditional. The beer garden furniture is extremely robust and weather-resistant. And still easily storable and transportable. Whether round, square, or rectangular – the walnut-coloured beer garden tables are available in various designs – just like the beer garden chairs, which can also be purchased individually.



INCLUDING FLOOR-PROTECTING AND SOUND-ABSORBING GLIDERS

Chair

Length: 40 cm
Width: 30 cm
Height: 88 cm

Rectangular table

Length: 120 cm
Width: 70 | 80 cm
Height: 74 cm

Square table

Length: 70 | 80 cm
Width: 70 | 80 cm
Height: 74 cm

Round table

Diameter Ø 90 cm
Height: 74 cm



"Everything was perfect and we are absolutely thrilled with the quality of our beautiful beer garden table sets. Thank you very much, we can definitely recommend RUKU1952®!"

© Goldschmiede Heike Fächtenhans

Italy

ZINGERLE GROUP SpA
Via Foerche 7 · I-39040 Naz-Sciaves (BZ)
T +39 0472 977 100 · global@zingerle.group
www.zingerle.group



www.ruku1952.com